

NLSS Desktop App

Installation & User Guide

About NLSS Desktop App

The NLSS Desktop App allows users to continue to access their NLSS Gateways and RMS Sites uninterrupted after January 12, 2021. Once users have input the requested IP for a gateway to access, the user will be presented with the standard NLSS Login Screen.

Release of NLSS 5.0 this year will replace any need for the NLSS Desktop App.

A Note about Installation & Security Settings

This application has been built with a DigiCert Code Signing certificate which verifies the application as safe and secure. To expedite the build process, the certificate we are using is a Standard Code Signing certificate as this enabled our developers to build and release regular updates for testing. Because of this, there may be extra steps (included in this document) during setup. Basically, the Standard Code Signing Certificate will flag an application as potentially unsafe until a certain number of users have downloaded and used it. This number of users is not public information, so we may have already reached that point and your installation process will be smooth.

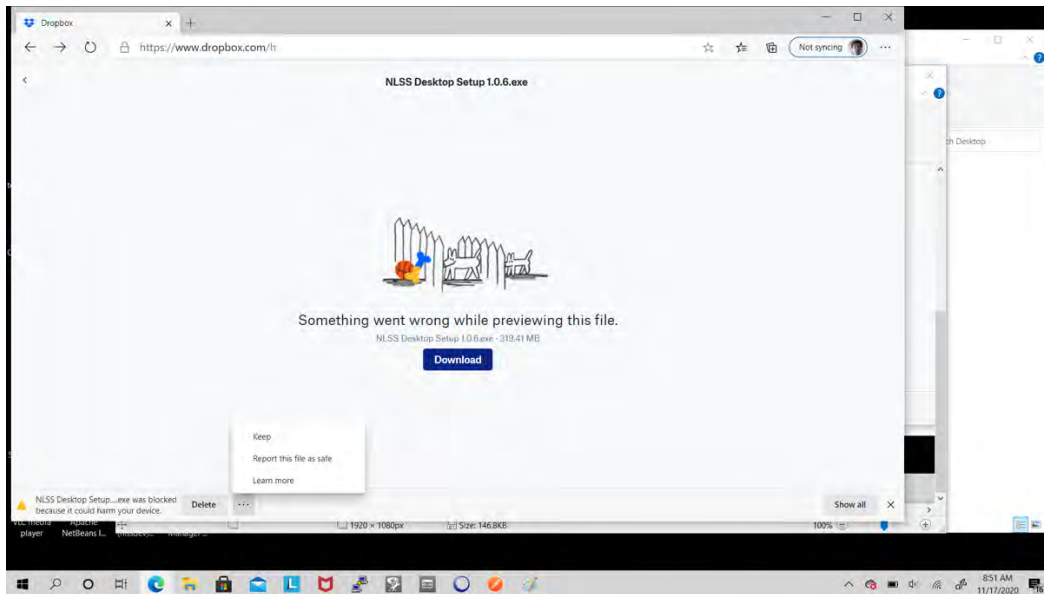
Please note that we are processing our new EV Certificate which will enable us to provide a pre-certified version of the App. This should be available by January 18, 2021. We will notify all customers who purchased the NLSS Desktop App as soon as that is available.

Thank you for your patience,

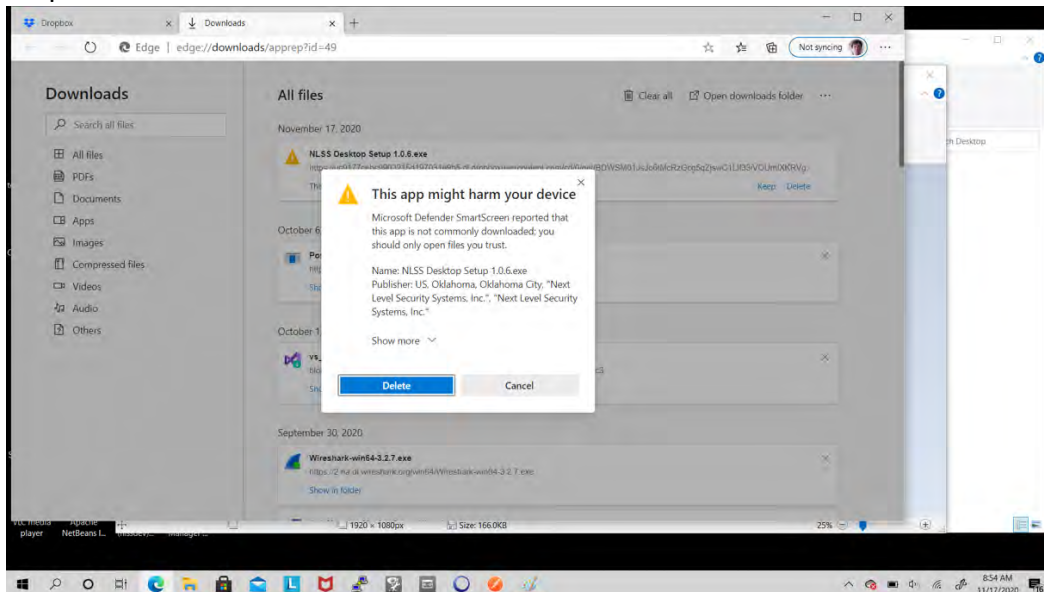
NLSS Sales Team

Installation:

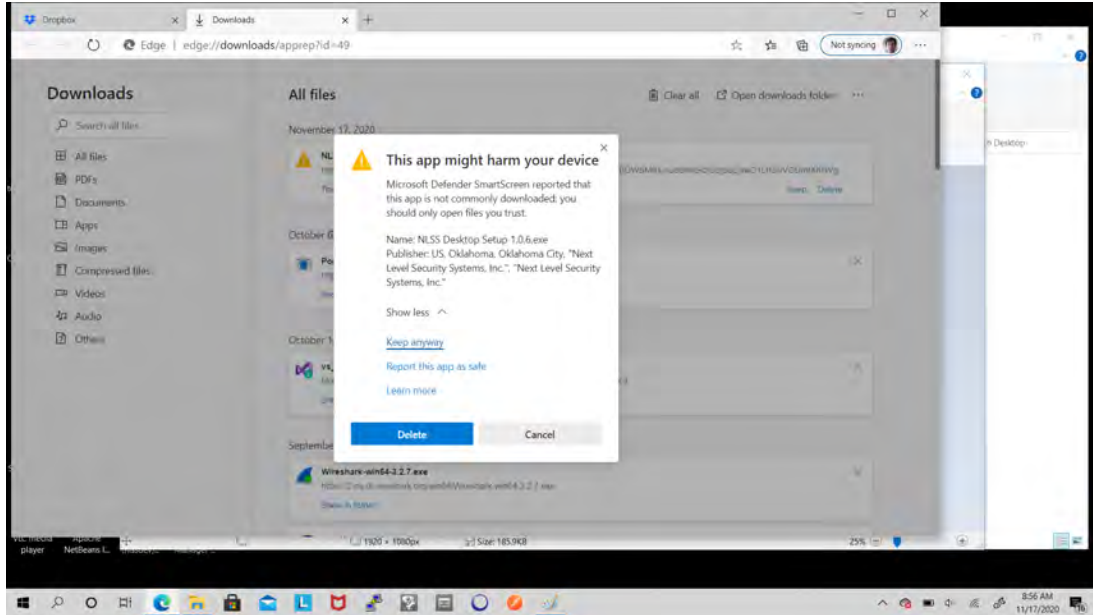
1. You will be provided a secure link to download the NLSS Desktop App.
2. When installing, you may receive a warning that the app has been 'blocked because it could harm...', click on the '...' next to the warning and select 'Keep':



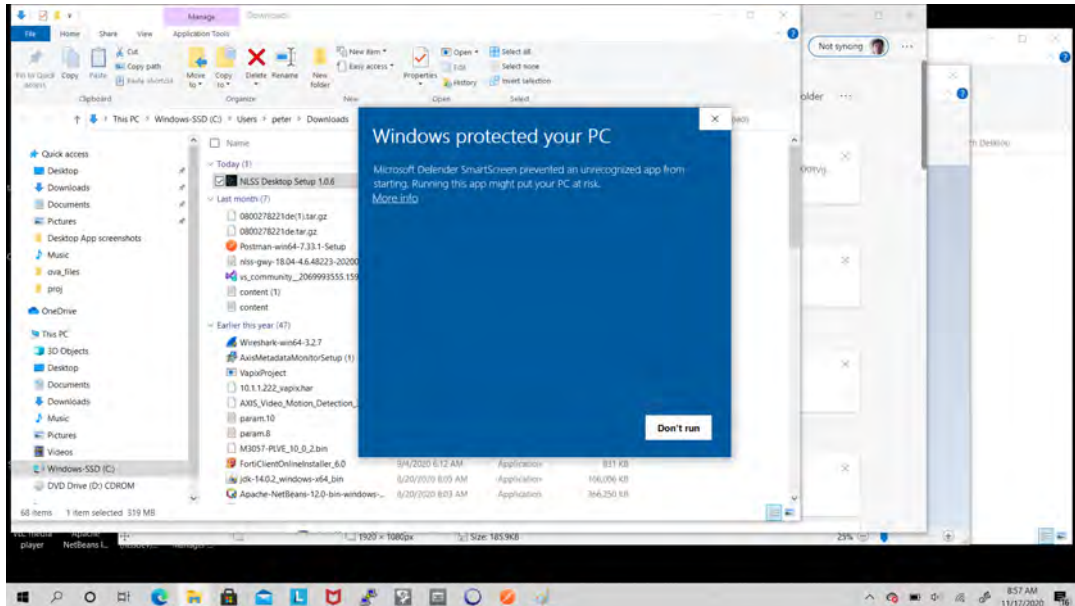
3. Once downloaded you may get a popup "This app might harm your device", click on the dropdown 'Show more ' and continue:

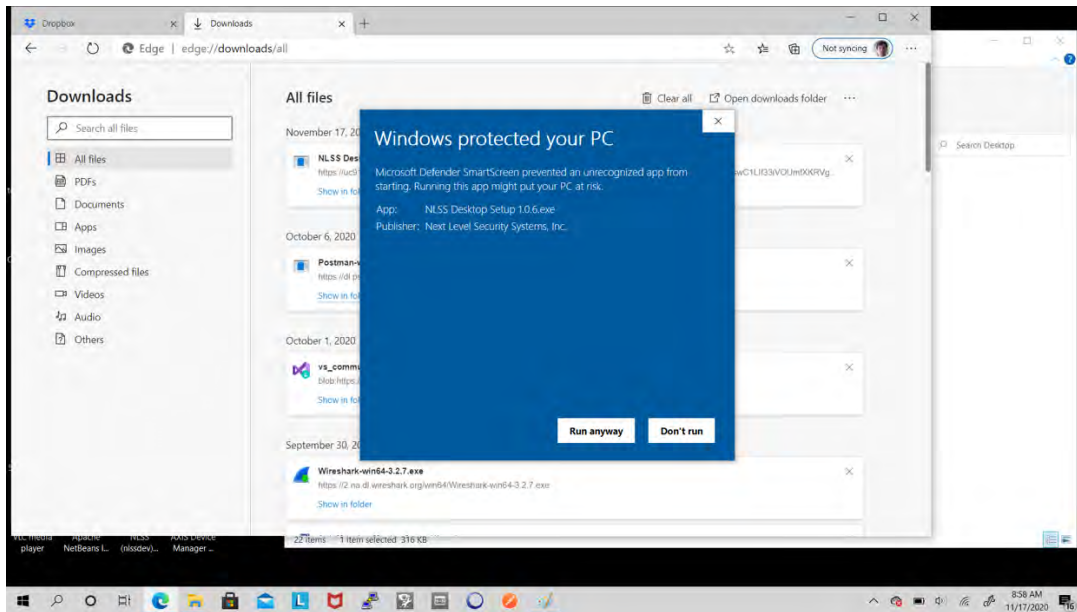


- Again you may get a second popup "This app might harm your device", ignore this and click "Keep anyway":

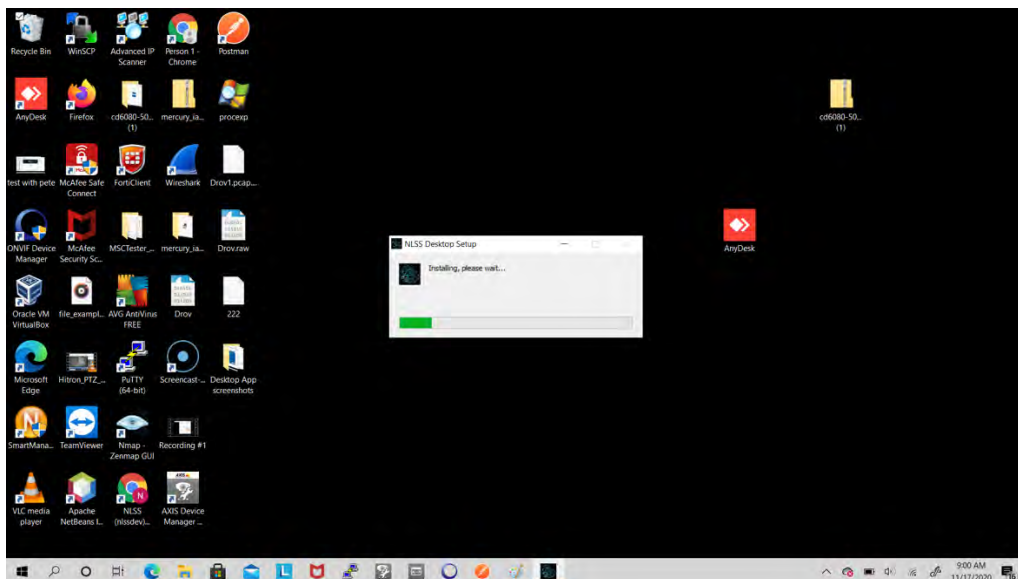


- Next you will see a popup 'Windows protected your PC'. Again, ignore this by clicking on 'More info'. Then you will see an option button at the bottom to "Run anyway". Click on "Run anyway":





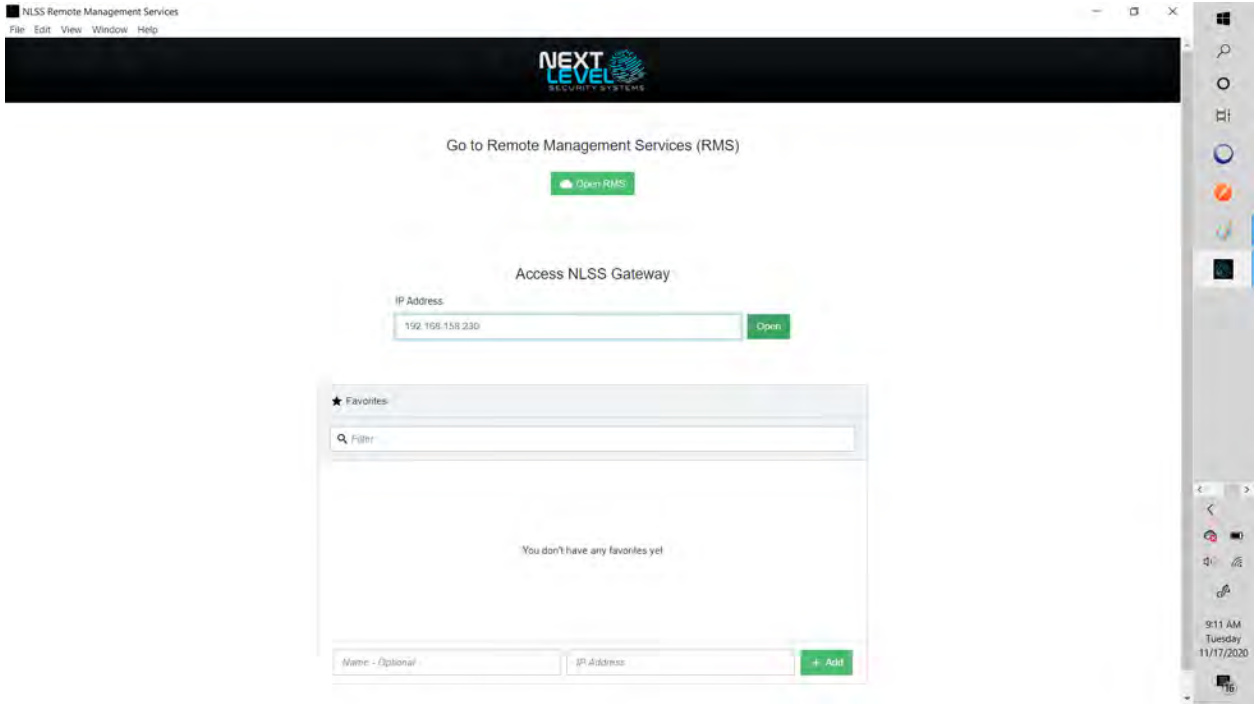
6. Now the app will start its installation process. This may take a few minutes:



User Guide:

- 1. After the install is complete, double click on the app to open. You will be presented with the Main Menu screen. Here is where you can enter the IP for a gateway you would like to connect to. This works exactly the same as if you were inputting that IP into your browser - i.e., you must have access to the IP address to reach the gateway. You may also click on "Open RMS" if you wish to access RMS/Cloud Services:

Main Menu Screen:



To Access a Gateway:

- 2. Type in the IP address of the gateway you wish to access and then click 'Open'. You will then be presented with your regular login screen for a gateway. At this point you may proceed as usual to use the Security System.

