

NLSS Gateway: Quick Start Guide

The *NLSS Gateway* is the control center of the NLSS Security Platform. Every NLSS system requires at least one NLSS Gateway, and optionally, more than one for some applications. Multiple NLSS Gateways work together when part of the same system.

This *Quick Start Guide* provides you with basic installation and configuration instructions, as well as important safety information for your NLSS Gateway. For details on configuring and operating your NLSS Gateway after installation, see the *NLSS Unified Security Suite 2.2: User Manual* available at NLSS.com.

Note: The NLSS Gateway interoperates with UL Listed security or access control panels that are able to operate independently of the NLSS Gateway. The NLSS Gateway is considered supplementary computer equipment per UL 294. The NLSS Gateway with installed software does not make security or access control decisions such as determining authorized access, acknowledging alarm signals, arming zones, etc.

PACKING LIST

The following items come with your NLSS Gateway:

- NLSS Gateway (either *GW-500* or *GW-3000* series)
- Power supply, plus a power cord
- Stand and mounting hardware (*GW-500* only)
- Discovery Utility CD
- *NLSS Gateway: Quick Start Guide* (this document)

SYSTEM REQUIREMENTS

You operate an NLSS Gateway via the NLSS Web Interface, which is accessed with any supported browser. Before accessing the Gateway, you must install the NLSS Discovery Utility on any PC in your local area network (LAN). This utility provides both the IP address and MAC address of the NLSS Gateway.

System Requirements for Discovery

Discovery of the NLSS Gateway requires the use of a Windows-based PC with access to the same network as the Gateway:

- Multicore Intel processor

- Operating Systems:
 - Windows XP (32/64)
 - Windows Vista (32/64)
 - Windows 7 (32/64)
- 2GB of RAM minimum, except for Win 7 64-bit which requires 4 GB
- CD/DVD reader
- Windows .NET Framework
- Access to the LAN on which your NLSS Gateway is installed

System Requirements for Configuration and Operation

Once discovered, the NLSS Gateway can be configured and operated from multiple platforms and browsers:

- Minimum dual core processor
- Operating Systems:
 - Windows XP (32/64)
 - Windows Vista (32/64)
 - Windows 7 (32/64)
 - Linux
 - Mac OS X v10.6 or above
- 2GB of RAM minimum
- Access to the LAN on which your NLSS Gateway is installed
- Browser: FireFox (3.0 or above), Safari (3.0 or above), or Internet Explorer (8.0 or above). Flash 10.3 or above also must be installed.

INSTALLATION

Before installing your NLSS Gateway, read all [Compliance Statements](#) and [Safety Instructions](#) at the back of this *Quick Start Guide*.

Front and Back Panels

The NLSS Gateway is currently available in two series: the GW-500 and GW-3000 series. Basic installation is the same for both series.

Physical Mounting

The NLSS Gateway can be free standing on a desk or other hard flat surface. The GW-500 comes with a stand for this purpose; the GW-3000 comes with *feet* for placing the unit on a hard surface.

Both NLSS Gateways can also be wall mounted or rack mounted using mounting brackets and screws. Mounting hardware is included with the GW-500 series, and optional with the GW-3000 series.

Connections

Both NLSS Gateways are easy to connect to your network:

1. Connect an Ethernet cable into the **Ethernet IN** port on the back of your NLSS Gateway. The other end of this Ethernet cable must connect to the LAN shared by other components in your NLSS Security Platform.
2. Plug in the power supply included with the unit, and connect the DC adapter to the back of the NLSS Gateway.
3. Turn **ON** the power button on the front of the NLSS Gateway.

This step completes the physical installation. Allow *one minute* for the unit to boot up, and then immediately follow the instructions in [NLSS Discovery Utility](#).

BASIC OPERATION

After installation, the operation of the NLSS Gateway begins with discovering and logging into the unit.

NLSS Discovery Utility

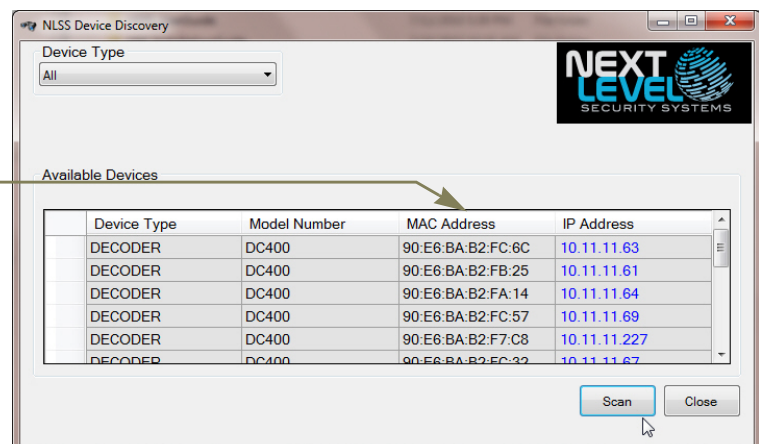
The first step of configuration is to run the NLSS Discovery Utility, which provides the IP address and MAC address of the NLSS Gateway that was just connected.

1. After the NLSS Gateway boots for the first time, insert the supplied *NLSS Discovery Utility CD* into the disc drive of a Windows-based computer on the same LAN as the NLSS Gateway.

Important: *The NLSS Discovery Utility requires Windows XP or later operating system with .NET 2.0 or above installed.*

2. Copy the Utility file from the CD to the PC's hard drive.
3. Run the Utility. The Utility lists all the NLSS Gateways it discovers on your network.
4. In the Utility screen, click **Scan** to find the NLSS Gateways (and NLSS HD Media Decoders, if present) on your network. In the Utility list of discovered Gateways, note the MAC address of the target Gateway.

Scan for your Gateway
and note its MAC address



5. In your browser, enter the default local address of the target NLSS Gateway:

`https://nlss-gw500-macaddress.local`

where *macaddress* is the MAC address (stripped of colons) of the target NLSS Gateway. For example, if the MAC address of the Gateway is 90:E6:BA:B2:F7:C8, then you would enter:

`https://nlss-gw500-90e6bab2f7c8.local`

- Note:** The scan results of the NLSS Discovery Utility also provide a link to the IP address of your NLSS Gateway, such as 10.11.11.61. You can navigate to the NLSS Gateway by clicking the IP address in the search results of the Utility. However, the direct IP address method of navigating to the NLSS Web Interface has drawbacks that the MAC address avoids:
- » By default, the NLSS Gateway is installed on your LAN using DHCP, so its IP address can change without warning. If you bookmark an NLSS Gateway using a DHCP IP address, the bookmark can become invalid when the address changes. Run the Utility again to find the new IP address.
 - » Using a static IP address instead of DHCP is another option, but it requires expertise in networking.
See *Gateways: Wired Network* Tab in Chapter 11: Global Configurations of the *NLSS Unified Security Suite 2.2: User Manual* for more information.
 - » Since MAC addresses do not change after installation, bookmarking the default local address—which includes the MAC address—is recommended.
6. Accept anything else that you are asked to install, such as browser plug-ins, etc., and bypass security certificate errors for now.

After Logging In

After you log into the NLSS NLSS Gateway for the first time, complete the following configurations:

1. Customize the default passwords for the Superuser and Operator.
 - Access the *Users* configuration screen by selecting **Configuration > Identity > Users** from the Main Menu.
See the *Edit Users* section in *Chapter 12: Configure Identity and Credentials* of the *NLSS Unified Security Suite 2.2: User Manual*.
2. Set the **Time Zone** and **Time Mode** for the Gateway.
 - Access the *Site Details* screen by selecting **Configuration > Global > Sites** from the Main Menu.
See *Configure Sites* in *Chapter 11: Global Configurations* of the *NLSS Unified Security Suite 2.2: User Manual*.
3. Check to see if a new version of firmware is available for your NLSS Gateway.
 - Access the Gateways configuration screen by selecting **Configuration > Global > Gateways** from the Main Menu.
See *Configure NLSS Gateways* in *Chapter 11: Global Configurations* of the *NLSS Unified Security Suite 2.2: User Manual*.

The *NLSS Unified Security Suite 2.2: User Manual* is available at NLSS.com.

OPERATION WITH REMOTE MANAGED SERVICES

If you are using this NLSS Gateway in conjunction with NLSS Remote Managed Services (RMS), then refer to the *NLSS Unified Security Suite 2.2: User Manual* for instructions. The manual is available at NLSS.com.

COMPLIANCE STATEMENTS

FCC Statement

WARNING: Changes or modifications to this unit not expressly approved by the party responsible for compliance could void the user's authority to operate the equipment. This equipment has been tested and found to comply with the limits for a Class A digital device, pursuant to Part 15 of the FCC rules. These limits are designed to provide reasonable protection against harmful interference in a residential installation. This equipment generates, uses, and can radiate radio frequency energy, and if not installed and used in accordance with the instruction manual, may cause harmful interference to radio communications. However, there is no guarantee that interference will not occur in a particular installation.

However, if this equipment does cause interference to radio or television equipment reception, which can be determined by turning the equipment off and on, the user is encouraged to try to correct the interference by one or more of the following measures:

- » Reorient or relocate the receiving antenna.
- » Increase the separation between equipment and receiver.
- » Connect the equipment to an outlet on a circuit different from that to which the receiver is connected.
- » Consult the dealer or an experienced radio/television technician for help.
- » Use a shielded and properly grounded I/O cable and power cable to ensure compliance of this unit to the specified limits of the rules.

European Union Compliance Statement

This Information Technology Equipment has been tested and found to comply with EMC Directive 2004/108/EEC standard(s) used for showing compliance with the essential requirements of the directive

- EN55022 (1998+A1:2000+A2:2003) Emissions
- EN61000-3-2:2000+A2: 2005
- EN61000-3-3:1995+A1: 2001 +A2: 2005
- EN55024 (1998+A1:2001+A2:2003) Immunity:
 - EN61000-4-2 (1995+A1:2001:1998+A2:2001) Electrostatic discharge
 - EN61000-4-3 (2002+A1:2002) Radiated immunity

- EN61000-4-4 (2004) Electrical fast transients/burst
- EN61000-4-5 (1995+A1:2001) Surges
- EN61000-4-6 (1996+A1:2001) Conducted immunity
- EN61000-4-8 (1993+A1:2001) Power frequency magnetic
- EN61000-4-11 (2004) Voltage dips and variation

Australian/New Zealand Compliance Statement

This device has been tested and found to comply with the Australian/New Zealand standard AS/NZS CISPR 22:2006 set out by the Spectrum Management Agency.

Certification for China Compulsory Product Certification

The Power Supply in your NLSS Gateway has been tested and found to comply with the China standards GB4943-2001, GB9254-1998, and GB17625-2003.

SAFETY INSTRUCTIONS

Your NLSS Gateway is designed and tested to meet the latest standards of safety for information technology equipment. However, to ensure your safety, it is important that you read the following safety instructions.

High-Risk Activities Warning

This system is not intended for use in the operation of nuclear facilities, aircraft navigation or communications systems, or air traffic control machines, or for any other uses where the failure of the system could lead to death, personal injury or severe environmental damage.

General Safety Information

- Read the installation instructions before connecting the system to the power source.
- This unit is intended for installation in restricted access areas. A restricted access area can be accessed only through the use of a special tool, lock and key, or other means of security.
- Only trained and qualified personnel should be allowed to install, replace, or service this equipment.
- Do not work on the system or connect or disconnect cables during periods of lightning activity.
- This equipment must be grounded. Never defeat the ground conductor or operate the equipment in the absence of a suitably installed ground conductor. Contact the appropriate electrical inspection authority or an electrician if you are uncertain that suitable grounding is available.

- Use only approved power cable(s). If you have not been provided with a power cable for your server, storage system, or appliance, or for any AC-powered option intended for your system, purchase a power cable that is approved for use in your country. The power cable must be rated for the product and for the voltage and current marked on the product's electrical ratings label. The voltage and current rating of the cable should be greater than the ratings marked on the product.
- Do not spill food or liquids on your system components, and never operate the product in a wet environment.
- Do not push any objects into the openings of your system components. Doing so can cause fire or electric shock by shorting out interior components.
- Keep your system components away from radiators and heat sources. Also, do not block cooling vents.
- Do not overload the AC supply branch circuit that provides power to the rack. The total rack load should not exceed 80 percent of the branch circuit rating.
- If any of the following conditions occur, unplug the product from the electrical outlet and replace the part or contact your authorized service provider:
 - The system cable, extension cable, or plug is damaged.
 - An object has fallen into the product.
 - The product has been exposed to water.
 - The product has been dropped or damaged.
- To prevent bodily injury when mounting or servicing this unit in a rack, you must take special precautions to ensure that the system remains stable. The following guidelines are provided to ensure your safety:
 - When mounting this unit in a partially filled rack, load the rack from the bottom to the top with the heaviest component at the bottom of the rack.
 - If the rack is provided with stabilizing devices, install the stabilizers before mounting or servicing the unit in the rack.
 - This unit should be mounted at the bottom of the rack if it is the only unit in the rack.
- Cleaning: Unplug your system from wall outlet before cleaning. Do not use liquid or aerosol cleaners. Use a damp (not wet) cloth for cleaning.
- Use caution when pressing the component rail release latches and sliding a component into or out of a rack; the slide rails can pinch your fingers.
- Position system cables and power cables carefully; route system cables and the power cable and plug so that they cannot be stepped on or tripped over. Be sure that nothing rests on your system components' cables or power cable.
- Ground yourself by touching an unpainted metal surface on the chassis, such as the metal around the card-slot openings at the back of the computer, before touching anything inside your computer. While you work, periodically touch an unpainted metal surface on the computer chassis to dissipate any static electricity that might harm internal components.

- When unpacking a static-sensitive component from its shipping carton, do not remove the component from the antistatic packing material until you are ready to install the component in your computer. Just before unwrapping the antistatic packaging, be sure to discharge static electricity from your body.
- When transporting a sensitive component, first place it in an antistatic container or packaging.
- Handle components and cards with care. Do not touch the components or contacts on a card. Hold a card by its edges or by its metal mounting bracket. Hold a component such as a microprocessor chip by its edges, not by its pins.
- To help avoid possible damage to the system board, wait 5 seconds after turning off the Gateway before disconnecting a device from the Gateway.
- When you disconnect a cable, pull on its connector or on its strain-relief loop, not on the cable itself. Some cables have a connector with locking tabs; if you are disconnecting this type of cable, press in on the locking tabs before disconnecting the cable. As you pull connectors apart, keep them evenly aligned to avoid bending any connector pins. Also, before you connect a cable, ensure that both connectors are correctly oriented and aligned.
- To help protect your system/components from sudden, transient increases and decreases in electrical power, use a surge suppressor, line conditioner, or a power supply that cannot be interrupted (UPS).

Battery Replacement Notice

WARNING: The NLSS Gateway contains an internal lithium manganese dioxide, a vanadium pentoxide. A risk of fire and burns exists if the battery pack is not properly handled. To reduce the risk of personal injury, adhere to the following:

- » Do not attempt to recharge the battery.
- » Do not expose the battery to temperature higher than 40 ° C.
- » Do not disassemble, crush, puncture, short external contacts, or dispose of in fire or water.



Next Level Security Systems, Inc.
6353 Corte Del Abeto, Suite 102
Carlsbad, CA 92011
+1 (760) 444-1410
www.nlss.com

FOR MORE INFORMATION

Please refer to our web site at: www.nlss.com

Contact us at 760-444-1410

© 2011 Next Level Security Systems, Inc. All rights reserved.

Product specifications subject to change without notice.